



JACK
ALUMINIUM SYSTEMS

JCW Curtain Walling

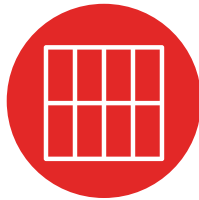
www.jackaluminium.co.uk



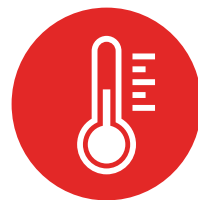
Suitable up to
13 metres



50mm sightlines



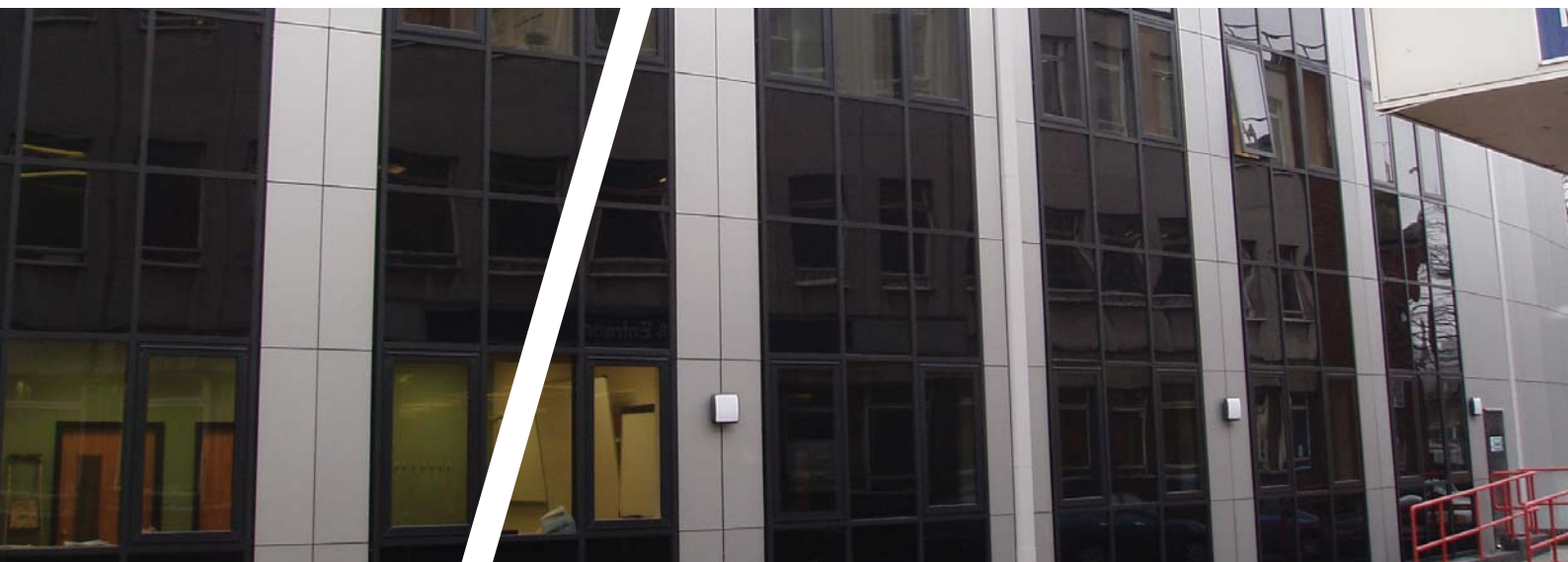
Clip in plate ladder
system



Low U-Values



Tested for windloads
up to 150mph



JCW Curtain Walling

Introduction

The JCW Curtain Walling suite is the ideal solution for projects that demand impressive energy efficiency benefits. Specially designed for low-rise applications, the JCW glazing system uses a clip in plate ladder system to make installation fast and straightforward, with the added benefit of being manufactured in the factory, ensuring quality before transport to site.

Design options are extensive and with high thermal and acoustic performance features, the system is ideal for commercial, residential & public-sector buildings that have a glass façade feature.

Energy conservation is at the forefront of any specifier or designer's brief. The JCW Curtain Walling suite uses a combination of aluminium and PVCu to achieve excellent performance in all aspects of the building structure. The aluminium profile provides all the benefits of this popular building material, with long lasting durability.

The PVCu profile enhances the thermal performance of the unit by its very nature of being a poor transmitter of heat. It also makes the installation procedure simpler and therefore faster.



Key Features

- Curtain walling up to 13 metres
- Three mullion transom sections
- 50mm sightline
- Clip in plate ladder system
- Transom drainage
- Accepts glazing up to 32mm
- Compatible with acoustic glass
- Low U-Values
- Tested for windloads up to 150mph

Technical Performance

- Tested to BS 6375: Part One
- Tested for air permeability to 600pa
- Tested for water tightness to 600pa
- Tested for windload to 2400pa

Service and Finish

- 5-7 days for standard RAL colour orders (subject to availability)
- Single colour polyester powder coat as standard, provided by Qualicoat approved supplier

Applications

- Commercial
- Schools
- Leisure Facilities
- Retail Premises
- Offices